

An OUTDOOR FIREPLACE for Picnics at Home

J. S. Elfner

YOU MAY WANT an elaborate barbecue, or just a few stones to hold a bed of coals. It may be tucked away beneath some trees or among some shrubs for that "picnic-in-the-woods" atmosphere. Or it can be a central feature for your garden development.

FITTING IT INTO the landscape will make it an always-attractive feature of your yard. Set it into the shrub borders in a convenient spot... or put it in its own special nook at the end of a garden path, with shrubs behind it to give it a background.

ALONG WITH THE RIGHT LOCATION, you will want to make sure that it is well built.

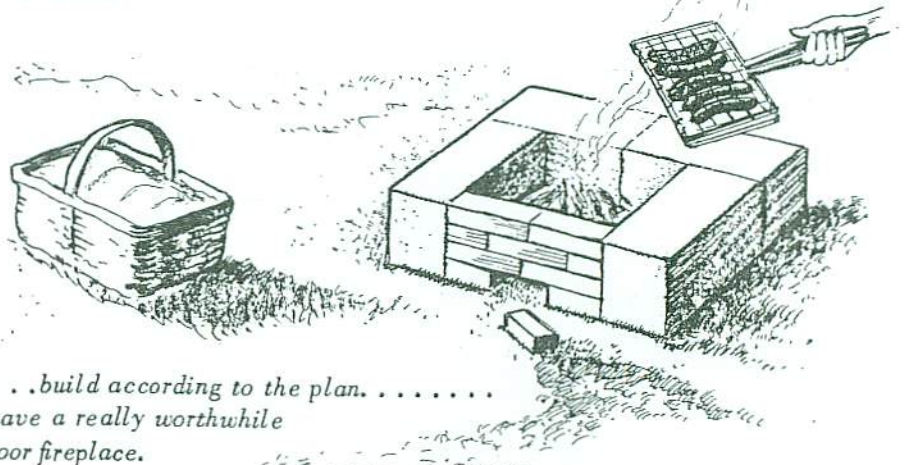
Use a fire-brick lining for the inside of the firebox, to protect against the damage done by heat.

Provide a solid base, to prevent mortar damage caused by heaving of the ground when it freezes.

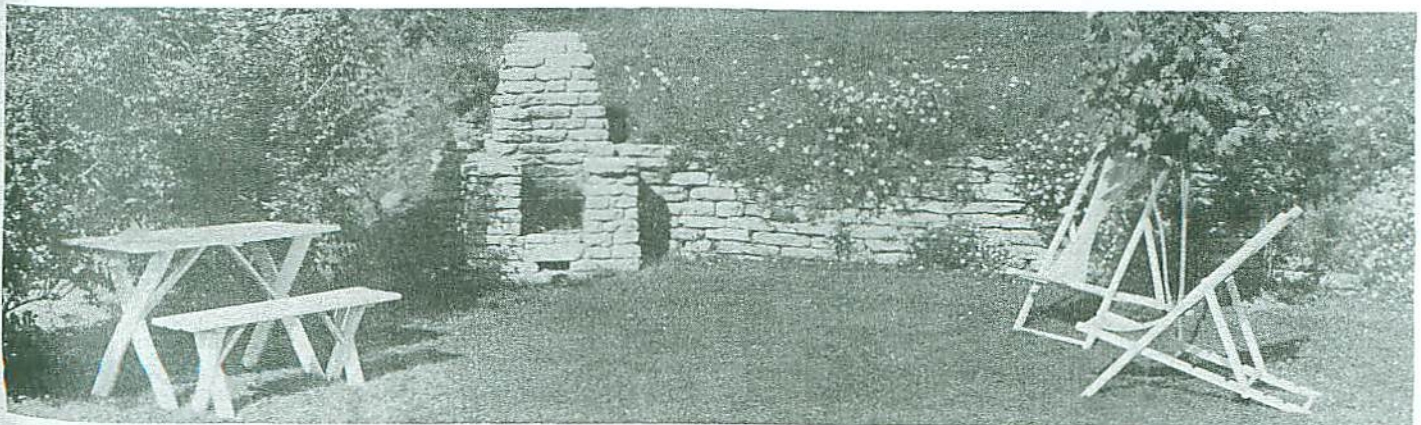
These two precautions will give you a fireplace that will last and give pleasure for years to come.

THE SIMPLEST KIND of outdoor fireplace can be made with four concrete building blocks and eight common bricks. It doesn't cost much, and you can put it together in a matter of minutes.

A PERMANENT OUTDOOR fireplace for average needs is shown in the working drawings on the back of this sheet. You can build it of brick or stone.



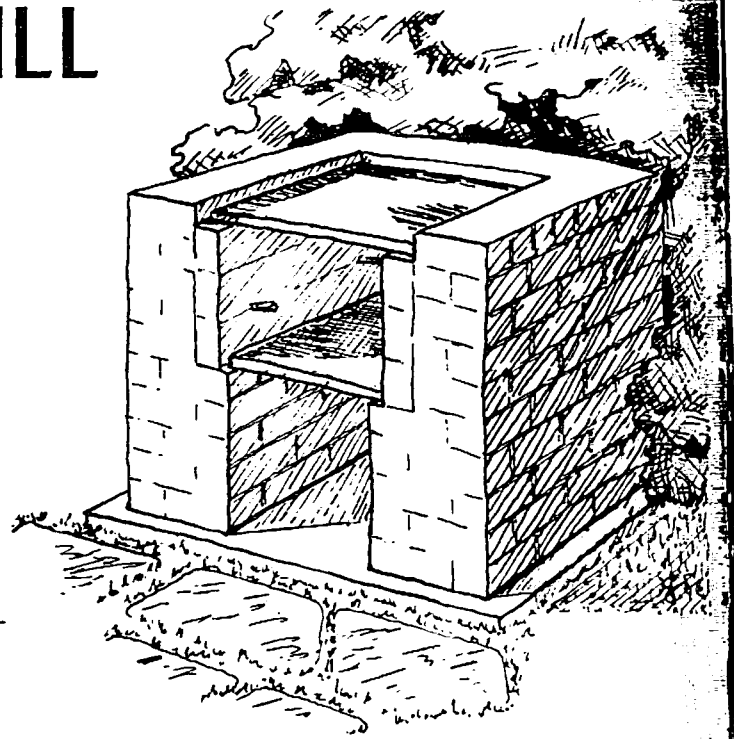
*Choose a good location. build according to the plan.
and you'll have a really worthwhile
outdoor fireplace.*



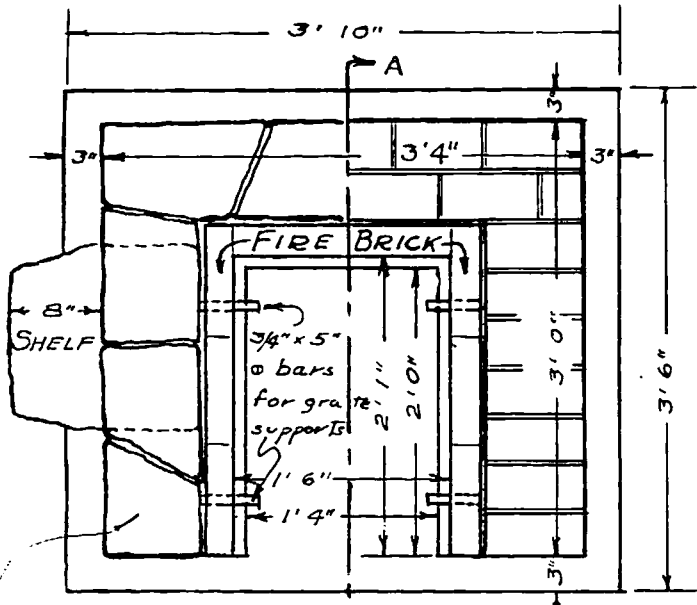
OUTDOOR GRILL

Safe, Convenient,
Ornamental

Brick or layered stone construction
on reinforced concrete slab

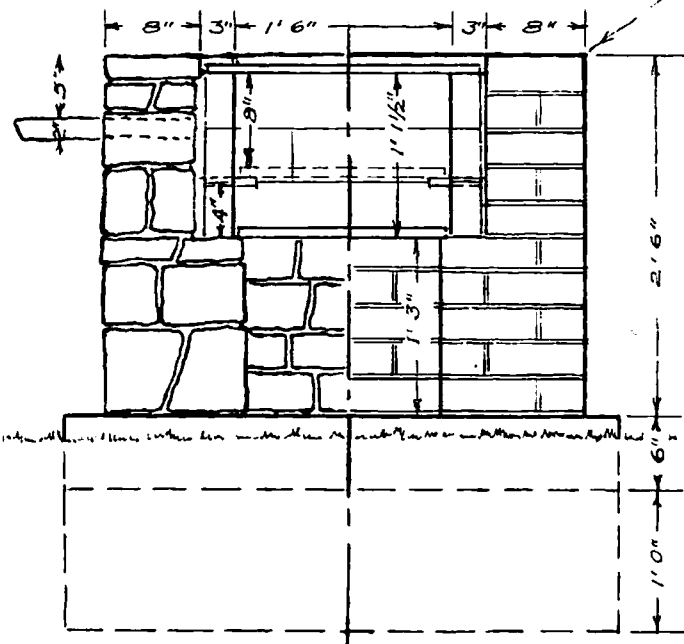


TOP VIEW

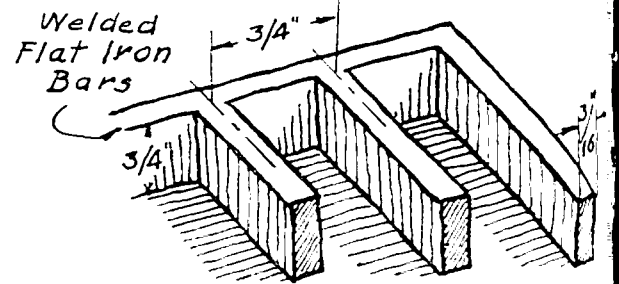


LAYERED STONE → A' BRICK

FRONT ELEV.

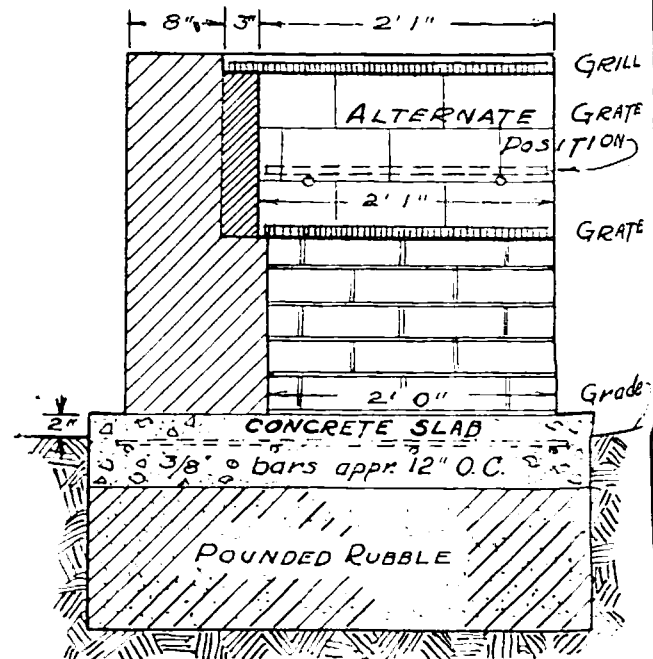


CONSTRUCTION DETAIL - GRILL & GRATE



Size of Grill and Grate 1/2" less
than opening (for expansion)

SECTION A-A'



Scale: 3/4" = 1'